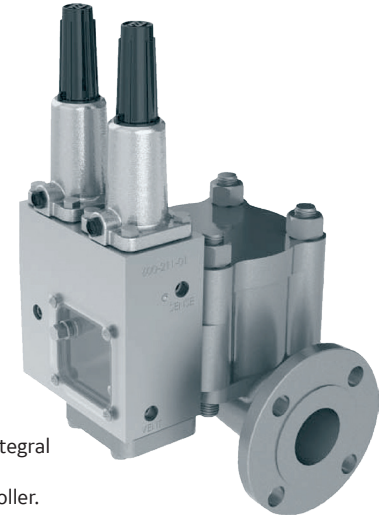


# Mooney\*

## 2" Flowgrid\* Slam Shut 250

NPT CL 300 CL 150 RF, CL 300 RF

The Mooney Slam Shut 250 is a unique pneumatically actuated device that automatically provides downstream pressure protection. By separating the pneumatic controller and mechanical latching mechanism, shut off is guaranteed to occur only when designated set points are reached. The patent pending design prevents disruptive and costly "accidental shutoffs". Positive shutoff is achieved instantly through the snap acting mechanism, and reset can be completed with common tools.

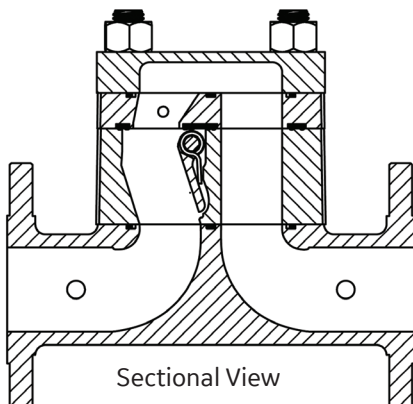


Flowgrid Regulator with Integral Shutoff Valve, Series 50D Dual Function Controller.

### Specifications

<b>Size</b>	2"
<b>Body Style</b>	Flowgrid 250 Single Port
<b>End Connections</b>	2" NPT CL 300, 2" CL 150 RF Flange, 2" CL 300
<b>Temperature</b>	Working -20°F to 150°F (-29°C to 65°C)
<b>Maximum Inlet Pressure</b>	250 psig (17 bar)
<b>Flow Direction</b>	Uni-Directional
<b>Body Taps</b>	Four 1/4" - 18 NPT (one inlet, one center port <sup>1)</sup> , one loading and one downstream)

1) Center port - between flapper valve and regulator



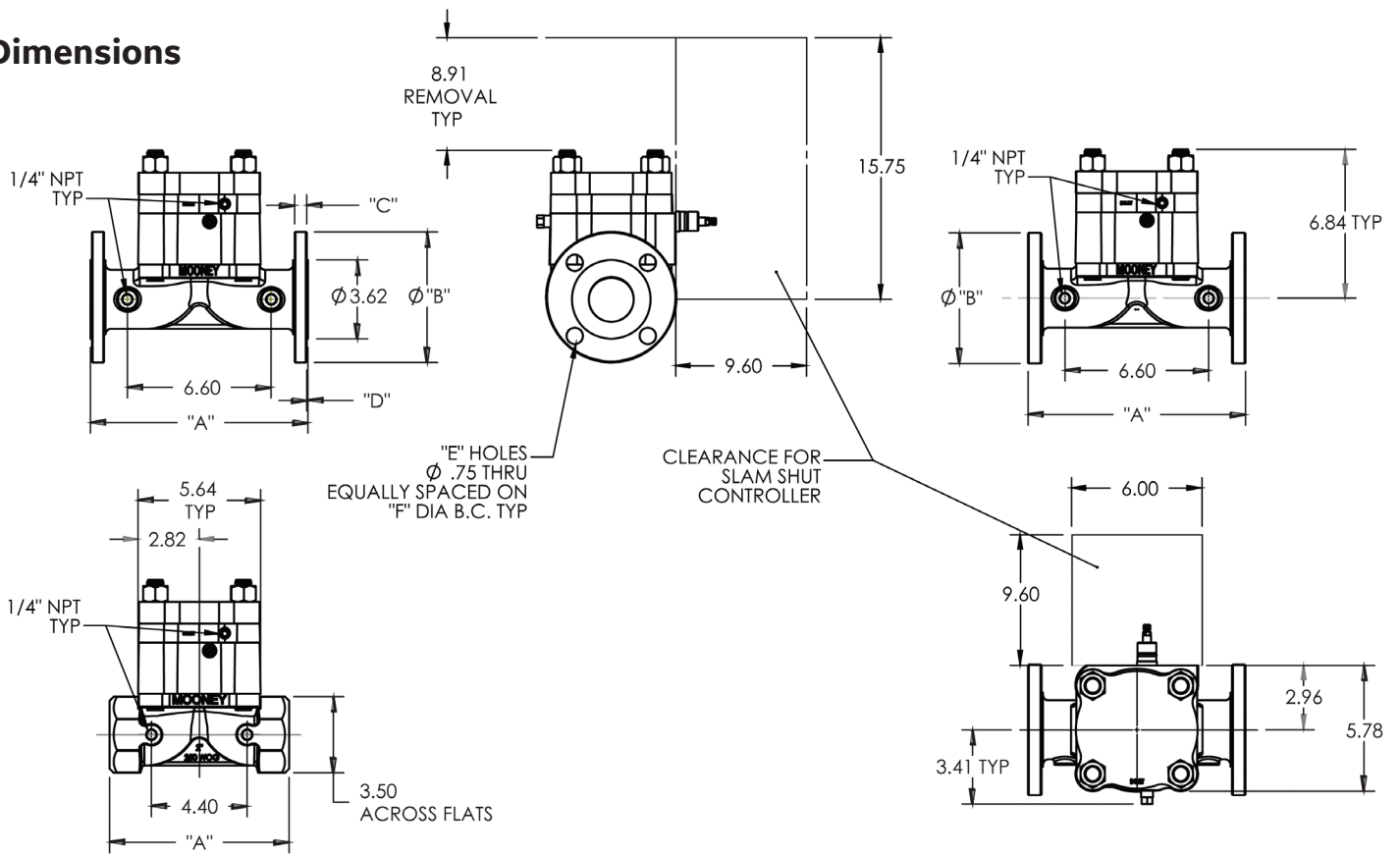
### Materials of Construction

<b>Body</b>	Ductile Iron ASTM A 395
<b>Seal Retainer and Flapper Body</b>	ASTM A 216 GR WCB Carbon Steel
<b>Cap</b>	ASTM A 516 Carbon Steel
<b>Flapper and Shaft</b>	17-4 Ph Stainless Steel
<b>O-Ring and Seals</b>	Nitrile, Optional Viton
<b>Studs and Nuts</b>	ASTM A 193 GR B-7 ASTM A 194 GR 2H or Equal
<b>Springs</b>	ASTM A 313-03 17-17 SS
<b>Bushings</b>	Acetal

### Stock Numbers

Slam Shut 250	Stock Number	Weight
NPT CL 300	SG-82	49 lbs.
150# Flange	SG-83	59 lbs.
300# Flange	SG-84	59 lbs.

# Dimensions



## Flange Dimensions

Flange Class	A	B	C	D	E	F
Class 150	10.00	6.00	.62	.06	4	4.75
Class 300	10.00	6.00	.56	-	4	4.75
NPT/SWE	8.25	-	-	-	-	-

## Flow Coefficients and Constants<sup>(1)</sup>

Mooney Slam Shut 250		
Cv	C <sub>1</sub>	C <sub>g</sub>
55	35	1700

1) Preliminary Data

[bhge.com](http://bhge.com)

\*Denotes a trademark of Baker Hughes, a GE company LLC.

Other company names and product names used in this document are the registered trademarks or trademarks of their respective owners.

© 2018 Baker Hughes, a GE company LLC - All rights reserved.

Baker Hughes reserves the right to make changes in specifications and features shown herein, or discontinue the product described at any time without notice or obligation. Contact your BHGE representative for the most current information. The Baker Hughes logo is a trademark of Baker Hughes, a GE company. The GE Monogram is a trademark of the General Electric Company.

GEA34052 12/2018

**BAKER HUGHES**  
a GE company

